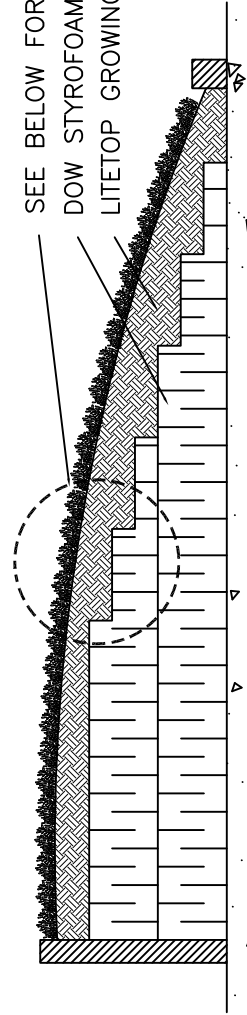


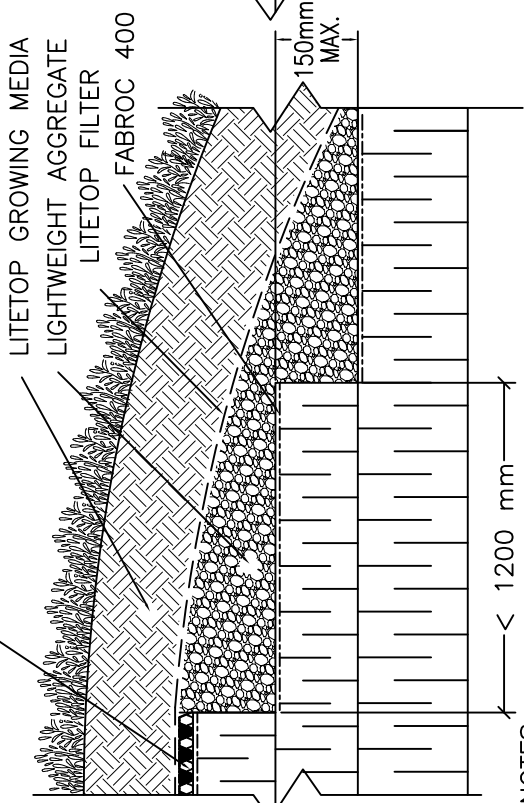
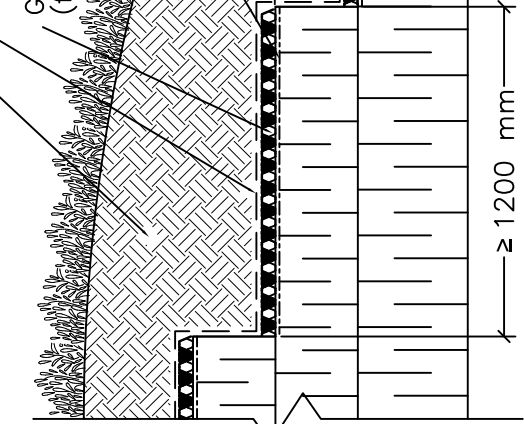
SEE BELOW FOR STEP OPTIONS
 DOW STYROFOAM INSULATION
 LITETOP GROWING MEDIA



GARDENDRAIN GR30 OR GR50 (fill with lightweight aggregate)
 FOR LARGE FLAT AREAS AT TOP OF MOUND
 (OPTION: CONTINUE WITH LIGHTWEIGHT AGGREGATE
 OVER ENTIRE MOUND)

LITETOP GROWING MEDIA
 LITETOP FILTER

GARDENDRAIN GR30 OR GR50
 (fill with lightweight aggregate)
 FABROC 400



NOTES:

- UNDER STEEPER SLOPES AND WITH EXTRUDED STYROFOAM STEPS LESS THAN 1200 mm WIDE, LIGHTWEIGHT AGGREGATE IS TO BE PLACED IN LIEU OF GARDENDRAIN. LITETOP FILTER MUST BE INSTALLED OVER LIGHTWEIGHT AGGREGATE TO CONTAIN THE GROWING MEDIA.
- UNDER SHALLOWER CONTOURS AND WITH EXTRUDED STYROFOAM STEPS GREATER THAN 1200 mm WIDE, GARDENDRAIN, FILLED WITH LIGHTWEIGHT AGGREGATE IS INSTALLED ON THE STEPS. LITETOP FILTER MUST BE INSTALLED OVER GARDENDRAIN TO CONTAIN THE GROWING MEDIA.
- THE SURFACE ANGLE OF THE GROWING MEDIA CAN VARY AND THE APPROPRIATE MEASURES NEEDED TO HOLD SLOPE SHOULD BE REVIEWED BY HYDROTECH. THE ANGLE OF REPOSE CAN ALSO VARY DUE TO REGIONAL DIFFERENCES IN LITETOP MEDIA COMPONENTS. CONSULT HYDROTECH FOR POSSIBLE ADDITIONAL EROSION MITIGATION CONSIDERATIONS.



GARDEN
 ROOF
 ASSEMBLY

SUGGESTION FOR CONTOURED SOIL
 MOUND PLACEMENT WITH STYROFOAM

HYDROTECH MEMBRANE CORP.

NO SCALE

GAC-6